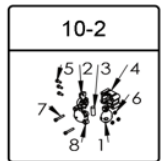
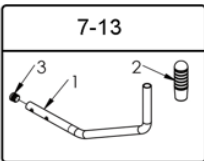
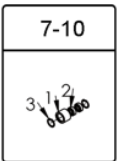
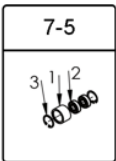
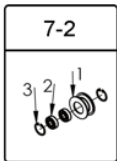
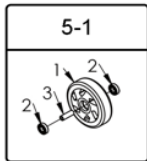
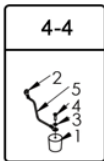
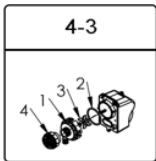
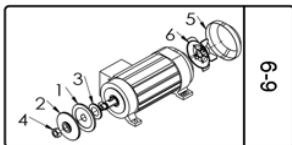
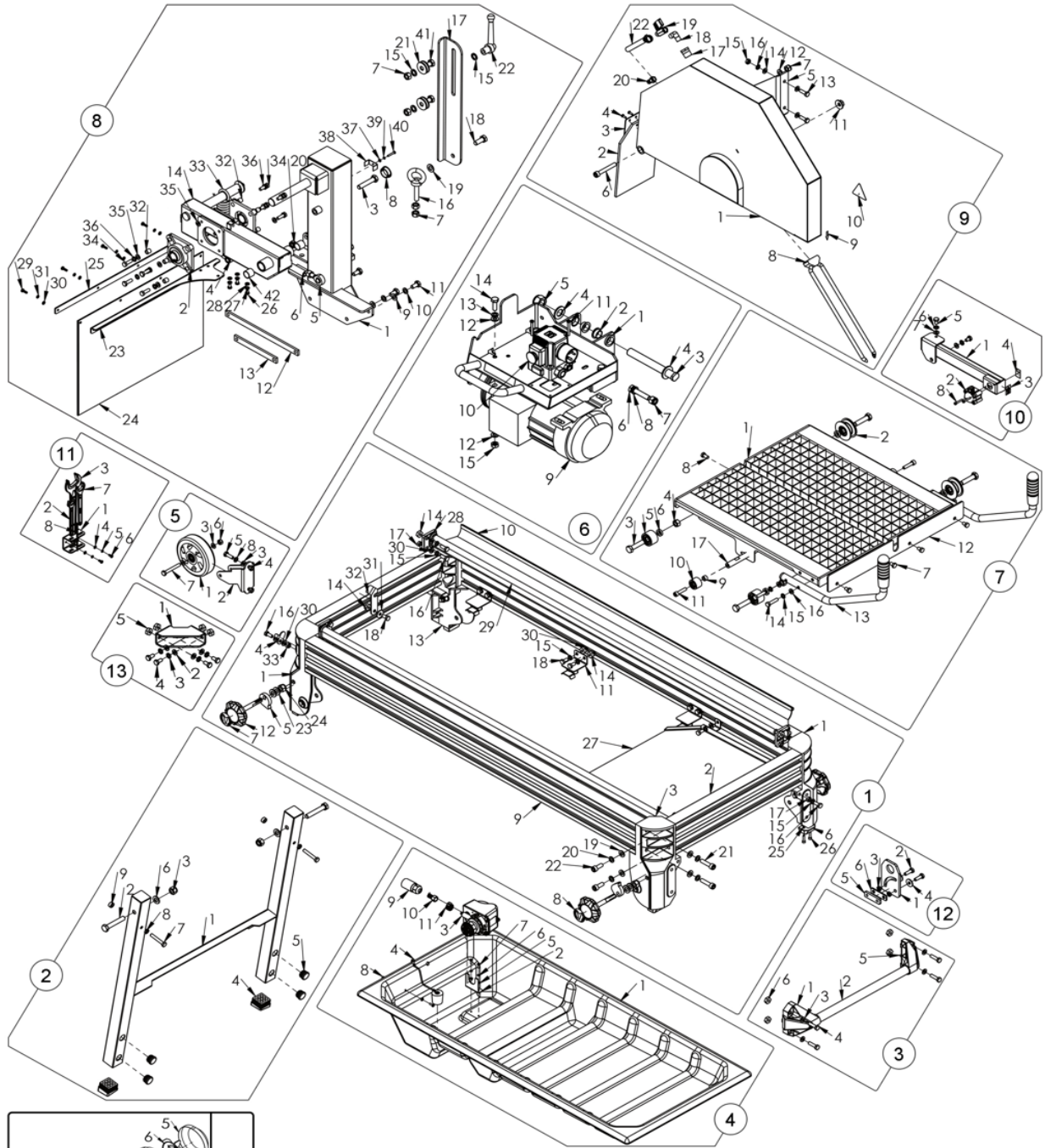


| Nr.    | Omschrijving                    | Artikelnummer | Nr.     | Omschrijving                        | Artikelnummer |
|--------|---------------------------------|---------------|---------|-------------------------------------|---------------|
| 1      | ALUMINIUM FRAME SET             | XGZCMS0001421 | 4.3.4   | INLAATKLEP                          |               |
| 1.1    | ALUMINIUM CONNECTOR RECHTSVOOR  | XGZC04020305  | 4.10    | GAS UNIT 1/4" VROUWELIJK            |               |
| 1.2    | ALUMINIUM STAAF (KORT)          | XGZC04020306  | 4.3.2   | AFSLUITRING TBV WATERPOMP           | XGZC03020080  |
| 1.3    | ALUMINIUM CONNECTOR LINKSVOOR   | XGZC04020307  | 4.3.3   | VEN TBV WATERPOMP                   | XGZC03010106  |
| 1.4    | PLAAT                           | XGZC04021851  | 4.4     | WATER PLUG MONTAGE                  | XGZCMS000011  |
| 1.5    | NOK 1025                        | XGZC04020335  | 4.4.1   | WATER PLUG                          | XGZC03010021  |
| 1.6    | RUBBEREN AFSTANDHOUDER          | XGZC03010050  | 4.4.2   | TOUW CONNECTOR                      | XGZC04020164  |
| 1.7    | DRAAIRICHTING LABEL (RECHTS)    | XGZC06020030  | 4.4.3   | RING                                | XGZC02030015  |
| 1.8    | DRAAIRICHTINGLABEL (LINKS)      | XGZC06020032  | 4.4.4   | ZELFTAPPENDE SCHROEF                | XGZC02010052  |
| 1.9    | ALUMINIUM STAAF -1320           | XGZC04021127  | 4.4.5   | TOUW WATERTANK                      | XGZC05020001  |
| 1.10   | RUBBERSTRIP-1400                | XGZC03020107  | 4.5     | RING                                | XGZC02030015  |
| 1.11   | WATERBAK STEUN GELAST           | XGZC04020302  | 4.6     | VEERRING                            | XGZC02030010  |
| 1.12   | DRAAIKNOP                       | XGZC04020333  | 4.7     | KRUISKOPSCHROEF M4X12               | XGZC02010038  |
| 1.13   | ALUMINIUM CONNECTOR RECHTS ACHT | XGZC04020309  | 4.8     | NYLON BORGMOER M4                   | XGZC02020009  |
| 1.14   | ZESHOEKIG AFSTANDSSTUK M8       | XGZC04020311  | 4.9     | STEKKER MANNELIJK SP2110/P3         | XGZC05020004  |
| 1.15   | VEERRING                        | XGZC02030006  | 4.11    | SLANGKLEM 16.2                      | XGZC04020281  |
| 1.16   | ZESKANTBOUT M8X20               | XGZC02010043  | 5       | TRANSPORTWIEL SET                   | XGZCMS000043  |
| 1.17   | ZESKANTMOER M8                  | XGZC02020012  | 5.1     | WIEL D125 D12 W36 MONTAGE           | XGZCMS000014  |
| 1.18   | ZESKANTSCHROEF M8X16            | XGZC02010042  | 5.1.1   | TRANSPORTWIEL F125                  | XGZC03010023  |
| 1.19   | RING                            | XGZC02030012  | 5.1.2   | KOGELLAGER                          | XGZC02050003  |
| 1.20   | VEERRING                        | XGZC02030008  | 5.1.3   | BUS Ø12XØ8X36                       | XGZC04020196  |
| 1.21   | ISO4762-M10x45                  | XGZC02010338  | 5.2     | WIELDRAGER                          | XGZC04020205  |
| 1.22   | ZESKANTBOUT ISO 4762M 10X30     | XGZC02010337  | 5.3     | SLUITRING                           | XGZC02030017  |
| 1.23   | RING                            | XGZC02030021  | 5.4     | ZESKANTMOER M8                      | XGZC02020012  |
| 1.24   | NYLON BORGMOER M12              | XGZC02020049  | 5.5     | ZESKANTBOUT M8X25                   | XGZC02010044  |
| 1.25   | NYLON BORGMOER M5               | XGZC02020045  | 5.6     | SCHROEF M8                          | XGZC02020010  |
| 1.26   | INBUSBOUT M5X20                 | XGZC02010062  | 5.7     | ZESKANTBOUT M8X60                   | XGZC02010053  |
| 1.27   | WATERGELEIDER GELAST            | XGZC040211191 | 5.8     | VEERRING                            | XGZC02030006  |
| 1.28   | GELEIDERAIL KUNSTSTOF ZITTING   | XGZC03010051  | 6       | ZAAGKOP SET                         | XGZCMS0002401 |
| 1.29   | STALEN GELEIDERAIL              | XGZC04021128  | 6.1     | ZAAGKOP GELAST                      | XGZC040211221 |
| 1.30   | SLUITRING                       | XGZC02030017  | 6.2     | GLIJLAGER                           | XGZC02050024  |
| 1.31   | GROTE RING                      | XGZC02030013  | 6.3     | SNIJKOP AS                          | XGZC04020195  |
| 1.32   | PLAAT                           | XGZC04021852  | 6.4     | RING                                | XGZC02030014  |
| 1.33   | SCHROEF M8                      | XGZC02020010  | 6.5     | NYLON BORGMOER M20                  | XGZC02020050  |
| 2      | POOT SET                        | XGZCMS000033  | 6.6     | ZESKANTBOUT M12X60                  | XGZC02010258  |
| 2.1    | POOT GELAST                     | XGZC04020299  | 6.7     | NYLON BORGMOER M12                  | XGZC02020049  |
| 2.2    | ZESKANTBOUT M12X70              | XGZC02010168  | 6.8     | VEERRING                            | XGZC02030024  |
| 2.3    | NYLON BORGMOER M12              | XGZC02020049  | 6.9     | ZESKANTBOUT M8X20                   | XGZC02010043  |
| 2.4    | KUNSTSTOF POOTSTEUN             | XGZC03020165  | 6.9.1   | BINNENKLEP                          | XGZC04023041  |
| 2.5    | EINDKAP BUIS Ø25                | XGZC03020071  | 6.9.2   | BUITENKLEP                          | XGZC04023042  |
| 2.6    | RING                            | XGZC02030021  | 6.9.3   | STOFDICHTHE HOES                    | XGZC04023043  |
| 2.7    | ZESKANTBOUT M8X50               | XGZC02010048  | 6.9.4   | ZESKANTMOER ISO4032-M20LH           | XGZC04022006  |
| 2.8    | ZESKANTMOER M8                  | XGZC02020040  | 6.9.5   | ACHTERKLEP 4KW MOTOR                | XGZC04020903  |
| 2.9    | NYLON DRUKPLAAT                 | XGZC03010046  | 6.9.6   | VENTILATOR VOOR 4KW MOTOR           | XGZC03010333  |
| 3      | TRANSPORT HANDVAT SET           | XGZCMS000027  | 6.10    | VEERRING DIN 127 - A8               | XGZC02030006  |
| 3.1    | ONDERSTEUNING VOOR TRANSPORTHAN | XGZC04020316  | 6.11    | SLUITRING                           | XGZC02030017  |
| 3.2    | HANDVAT BUIS                    | XGZC04020283  | 6.12    | 2.8KW MOTOR 230V MET M20 LINKSE M   | XGZC050101151 |
| 3.3    | SLUITRING                       | XGZC02030017  | 6.12.1  | VENTILATOR VOOR 2.8KW MOTOR         | XGZC03010334  |
| 3.4    | ZESKANTBOUT M8X30               | XGZC02010045  | 6.12.2  | DEKSEL ACHTERKANT 2.8KW MOTOR       | XGZC04020905  |
| 3.5    | DOPSLEUTEL-SCHROEF M4X5         | XGZC02010071  | 6.12.3  | CONDENSATOR 150uF 250vac 50/60 hz T | XGZC05010151  |
| 3.6    | ZESHOEKIG AFSTANDSSTUK M8       | XGZC04020311  | 6.12.4  | CONDENSATOR 35MF TYPE GT5010/6010   | XGZC05010017  |
| 4      | WATERBAK SET                    | XGZCMS000038  | 6.12.5  | ZESKANTMOER ISO4032-M20LH           | XGZC04022006  |
| 4.1    | WATERBAK                        | XGZC03010049  | 6.12.6  | SOFT START UNIT RE CS-220P          | XGZC05010191  |
| 4.2    | POMP HOUDER                     | XGZC04020144  | 6.12.7  | DEKSEL VOOR BEDRADINGSBOX           | XGZC03010348  |
| 4.3    | WATERPOMP 230V 50W              | XGZC05010006  | 6.12.8  | BEDRADINGSDOOS                      | XGZC03010349  |
| 4.3+4. | WATER POMP MET MANNELIJKE PLUG  | XGZCMS000262  | 6.12.9  | PAKKING VOOR BEDRADINGSBOXDEKSEL    | XGZC03020258  |
|        | FILTERSET COMPLEET WATERPOMP:   | XGZCMS000284  | 6.12.10 | PAKKING TUSSEN BEDRADINGSKAST EN M  | XGZC03020259  |
| 4.3.1  | FILTERSET TBV WATERPOMP         |               | 6.12.11 | KOORDGREEP M20X1,5                  | XGZC03010350  |

| Nr.     | Omschrijving              | Artikelnummer | Nr.    | Omschrijving                     | Artikelnummer |
|---------|---------------------------|---------------|--------|----------------------------------|---------------|
| 6.12.12 | KABELAANSLUITBLOK         | XGZC05010210  | 8.23   | ONDERSTEUNING SPATSCHERM         | XGZC04021912  |
| 6.13    | SCHAKELAAR KOA2           | XGZC05010076  | 8.24   | SPATSCHERM FRAME                 | XGZC03020159  |
| 6.14    | KRUIKOPSCHROEF M5X45      | XGZC02010040  | 8.25   | PLAAT                            | XGZC04021857  |
| 6.15    | BINNENFLENS               | XGZC04022471  | 8.26   | ZESKANTBOUT M6X12                | XGZC02010184  |
| 6.16    | BUITENFLENS               | XGZC04022472  | 8.27   | VEERRING                         | XGZC02030019  |
| 7       | ZAAGTAFEL SET             | XGZCMS000146  | 8.28   | SLUITRING                        | XGZC02030020  |
| 7.1     | ZAAGTAFEL GELAST          | XGZC04021125  | 8.29   | KRUIKOPBOUT M5X16                | XGZC02011022  |
| 7.2     | GELEIDINGSROLSAMENSTEL    | XGZCMS000147  | 8.30   | SLUITRING ISO 140HV              | XGZC02030016  |
| 7.2.1   | GELEIDEROL                | XGZC04021144  | 8.31   | VEERRING A5                      | XGZC02030011  |
| 7.2.2   | DIEPGROEFKOGELLAGER       | XGZC02050025  | 8.32   | BUS VOOR LAGER                   | XGZC04021858  |
| 7.2.3   | BORGRING                  | XGZC02030050  | 8.33   | VEER BS400                       | XGZC04021012  |
| 7.3     | ZESKANTBOUT M12X50        | XGZC02010169  | 8.34   | ZESKANTBOUT M8X25                | XGZC02010044  |
| 7.4     | ZESKANTMOER M12           | XGZC02020053  | 8.35   | SLUITRING                        | XGZC02030017  |
| 7.5     | ONDERSTEUNENDE ROLSET     | XGZCMS000148  | 8.36   | VERSTELBAAR HENDEL               | XGZC02030006  |
| 7.5.1   | ONDERSTEUNENDE ROL        | XGZC04021145  | 8.37   | RING                             | XGZC02030015  |
| 7.5.2   | DIEPGROEFKOGELLAGER       | XGZC02050025  | 8.38   | KABELBRUG                        | XGZC04020142  |
| 7.5.3   | BORGRING                  | XGZC02030050  | 8.39   | VEERRING                         | XGZC02030010  |
| 7.6     | BUS                       | XGZC04021146  | 8.40   | KRUIKOPSCHROEF M4X25             | XGZC02010039  |
| 7.7     | ZESKANTBOUT M8X12         | XGZC02010121  | 8.41   | ZESKANTBOUT M12X25               | XGZC02010259  |
| 7.8     | ZESKANTSCHROEF M8X16      | XGZC02010042  | 8.42   | IGUS LAGER                       | XGZC02050020  |
| 7.9     | BUS                       | XGZC04021147  | 9      | 600 ZAAGKAPBESCHERMING SET       | XGZCMS000239  |
| 7.10    | ANIT KANTELWIEL SET       | XGZCMS000149  | 9.1    | ZAAGKAP GELAST                   | XGZC04022473  |
| 7.10.1  | ANTI KANTEL WIEL          | XGZC04021148  | 9.2    | RUBBER VOOR HET BLOKKEREN VAN WA | XGZC03020109  |
| 7.10.2  | KOGELLAGER                | XGZC02050002  | 9.3    | RUBBEREN VASTE PLAAT             | XGZC04021108  |
| 7.10.3  | BORGVEER                  | XGZC02030051  | 9.4    | KRUIKOPSCHROEF M4X12             | XGZC02010038  |
| 7.11    | ZESKANTBOUT M8X35         | XGZC02010090  | 9.5    | VASTE PLAAT                      | XGZC04022474  |
| 7.12    | KALIBRATIE PLAAT          | XGZC04021116  | 9.6    | INBUSBOUT M10X70                 | XGZC02010194  |
| 7.13    | DUWHANDVAT SET            | XGZCMS000188  | 9.7    | NYLON BORGMOER M10               | XGZC02020008  |
| 7.13.1  | DUWHANDVAT                | XGZC04021878  | 9.8    | Y-VERDELER GELAST-600            | XGZC04022475  |
| 7.13.2  | PLASTIC HENDEL            | XGZC03010018  | 9.9    | STICKER MET PIJL                 | XGZC06020026  |
| 7.13.3  | EINDKAP BUIS Ø20          | XGZC03010027  | 9.10   | BESCHERMSTICKER                  | XGZC06020022  |
| 7.14    | ZESKANTBOUT M8X35         | XGZC02010118  | 9.11   | FLENSMOER M10                    | XGZC02020070  |
| 7.15    | VEERRING                  | XGZC02030006  | 9.12   | RING                             | XGZC02030012  |
| 7.16    | SLUITRING                 | XGZC02030017  | 9.13   | ZESKANTBOUT M8X25                | XGZC02010044  |
| 7.17    | DRIJFSTANG                | XGZC04021143  | 9.14   | SLUITRING                        | XGZC02030017  |
| 8       | DRAAGARM SET              | XGZCMS0002311 | 9.15   | ZESKANTMOER M8                   | XGZC02020012  |
| 8.1     | VERTICALE ARM GELAST      | XGZC040219131 | 9.16   | VEERRING                         | XGZC02030006  |
| 8.2     | LAGER                     | XGZC02050035  | 9.17   | REDUCERENDE NIPEL                | XGZC02070001  |
| 8.3     | ZESKANTBOUT M12X60        | XGZC02010258  | 9.18   | WATER AANSLUITING ELLEBOOG       | XGZC04022021  |
| 8.4     | NYLON BORGMOER M12        | XGZC02020049  | 9.19   | WATERKRAAN 1/4 '                 | XGZC02070002  |
| 8.5     | OOGSCHROEFEN              | XGZC02050019  | 9.20   | GAS UNIT 1/4" VROUWELIJK         | XGZC02070003  |
| 8.6     | DRIJFSTANG                | XGZC04021137  | 9.21   | SLANGKLEM 16.2                   | XGZC04020281  |
| 8.7     | ZESKANTMOER M12           | XGZC02020053  | 9.22   | BRONWATERLEIDING                 | XGZC03010162  |
| 8.8     | RONDE DOP F30             | XGZC03020112  | 10     | SET LASERFRAME                   | XGZCMS0002061 |
| 8.9     | RING                      | XGZC02030012  | 10.1   | LASER FRAME                      | XGZC040220021 |
| 8.10    | VEERRING                  | XGZC02030008  | 10.2   | LASERSET                         | XGZCTS000103  |
| 8.11    | BOUT M10X20               | XGZC02010171  | 10.2.1 | LASER BALL_L                     | XGZC03010214  |
| 8.12    | PLAT STAAL                | XGZC04021853  | 10.2.2 | LASER BALL_R                     | XGZC03010215  |
| 8.13    | PLAT STAAL                | XGZC04021854  | 10.2.3 | LASERLAMP 9X21 -110HOEK          | XGZC05010070  |
| 8.14    | ROTTERENDE ARM GELAST     | XGZC040218551 | 10.2.4 | LASERBAL HOOFD COVER             | XGZC03010216  |
| 8.15    | VEERRING                  | XGZC02030024  | 10.2.5 | HEX. INBUSBOUT M4X10             | XGZC02010255  |
| 8.16    | OOGBOUT M12 x 60          | XGZC02010286  | 10.2.6 | ZESKANTMOER M4                   | XGZC02020015  |
| 8.17    | DIEPTE-AANPASSINGSBALK    | XGZC04021882  | 10.2.7 | HEX. INBUSBOUT M4X25             | XGZC02010256  |
| 8.18    | ZESKANTBOUT M12X30        | XGZC02010218  | 10.2.8 | LASERBAL ZIJKANT COVER           | XGZC03010217  |
| 8.19    | RING                      | XGZC02030021  | 10.3   | VEILIGHEIDSTICKER                | XGZC06020180  |
| 8.20    | NYLON SLOT DUNNE MOER M12 | XGZC02020054  | 10.4   | VEILIGHEIDSTICKER                | XGZC06020181  |
| 8.21    | GROTE RING                | XGZC02030049  | 10.5   | ZESKANTBOUT M8X12                | XGZC02010121  |
| 8.22    | HANDVAT                   | XGZC03010159  | 10.6   | VEERRING                         | XGZC02030006  |

| Nr.  | Omschrijving                      | Artikelnummer |
|------|-----------------------------------|---------------|
| 10.7 | SLUITRING                         | XGZC02030017  |
| 10.8 | HEX. INBUSBOUT M4X25              | XGZC02010256  |
| 11   | GEREEDSCHAPSHOUDER EN GEREEDSCHAP | XGZCMS000243  |
| 11.1 | HOUDER VOOR GEREEDSCHAP           | XGZC04022487  |
| 11.2 | SLEUTEL 13 MM                     | XGZC04020163  |
| 11.3 | SLEUTEL 30 MM                     | XGZC04020162  |
| 11.4 | RING                              | XGZC02030015  |
| 11.5 | VEERRING                          | XGZC02030010  |
| 11.6 | KRUISPAN ZESKANTBOUT M4X10        | XGZC02010180  |
| 11.7 | SLEUTEL 17MM                      | XGZC04020589  |
| 11.8 | INBUSSLEUTEL 3MM                  | XGZC04022208  |
| 12   | HIJSOOG RECHTHOEKIG SET 2         | XGZCMS000258  |
| 12.1 | MACHINE HIJSOOG RECHTHOEKIG       | XGZC04022632  |
| 12.2 | ZESKANTBOUT M8X25                 | XGZC02010044  |
| 12.3 | ZESKANTMOER M8                    | XGZC02020040  |
| 12.4 | GROTE RING                        | XGZC02030013  |
| 12.5 | VERGRENDELPLAAT                   | XGZC04022905  |
| 12.6 | AFSTANDSHOUDER                    | XGZC04022906  |
| 13   | FRAME VERSTERKENDE MONTAGE        | XGZCMS000285  |
| 13.1 | VERSTEVIINGSSTUK                  | XGZC04023036  |
| 13.2 | SLUITRING                         | XGZC02030017  |
| 13.3 | VEERRING DIN 127 - A8             | XGZC02030006  |
| 13.4 | ZESKANTSCHROEF M8X16              | XGZC02010042  |
| 13.5 | ZESHOEKIG AFSTANDSSTUK M8         | XGZC04020311  |
| 14   | ASSEMBLAGE STALEN GELEIDER        | XGZCMS000287  |
| 14.1 | STALEN GELEIDER                   | XGZC04023132  |
| 14.2 | GRIPKNOP STER M10x25              | XGZC03010145  |
|      | STROOMKABEL 230V GC/GP/GT/BEX SER | XGZC05010069  |

| Nr. | Omschrijving | Artikelnummer |
|-----|--------------|---------------|
|-----|--------------|---------------|



| Nr.   | Omschrijving                    | Artikelnummer | Nr.    | Omschrijving                   | Artikelnummer |
|-------|---------------------------------|---------------|--------|--------------------------------|---------------|
| 1     | ALUMINIUM FRAME SET             | XGZCMS0001421 | 4.3+4. | WATER POMP MET MANNELIJKE PLUG | XGZCMS000262  |
| 1.1   | ALUMINIUM CONNECTOR RECHTSVOOR  | XGZC04020305  | 4.3    | WATERPOMP 230V 50W             | XGZC05010006  |
| 1.2   | ALUMINIUM STAAF (KORT)          | XGZC04020306  | 4.3.2  | AFSLUITRING TBV WATERPOMP      | XGZC03020080  |
| 1.3   | ALUMINIUM CONNECTOR LINKSVOOR   | XGZC04020307  | 4.3.3  | VEN TBV WATERPOMP              | XGZC03010106  |
| 1.4   | PLAAT                           | XGZC04021851  | 4.4    | WATER PLUG MONTAGE             | XGZCMS000011  |
| 1.5   | NOK 1025                        | XGZC04020335  | 4.4.1  | WATER PLUG                     | XGZC03010021  |
| 1.6   | RUBBEREN AFSTANDHOUDER          | XGZC03010050  | 4.4.2  | TOUW CONNECTOR                 | XGZC04020164  |
| 1.7   | DRAAIRICHTING LABEL (RECHTS)    | XGZC06020030  | 4.4.3  | RING                           | XGZC02030015  |
| 1.8   | DRAAIRICHTINGLABEL (LINKS)      | XGZC06020032  | 4.4.4  | ZELFTAPPENDE SCHROEF           | XGZC02010052  |
| 1.9   | ALUMINIUM STAAF -1320           | XGZC04021127  | 4.4.5  | TOUW WATERTANK                 | XGZC05020001  |
| 1.10  | RUBBERSTRIP-1400                | XGZC03020107  | 4.5    | RING                           | XGZC02030015  |
| 1.11  | WATERBAK STEUN GELAST           | XGZC04020302  | 4.6    | VEERRING                       | XGZC02030010  |
| 1.12  | DRAAIKNOP                       | XGZC04020333  | 4.7    | KRUISKOPSCHROEF M4X12          | XGZC02010038  |
| 1.13  | ALUMINIUM CONNECTOR RECHTS ACHT | XGZC04020309  | 4.8    | NYLON BORGMOER M4              | XGZC02020009  |
| 1.14  | ZESHOEKIG AFSTANDSSTUK M8       | XGZC04020311  | 4.9    | STEKKER MANNELIJK SP2110/P3    | XGZC05020004  |
| 1.15  | VEERRING                        | XGZC02030006  | 4.10   | GAS UNIT 1/4" VROUWELIJK       | XGZC02070003  |
| 1.16  | ZESKANTBOUT M8X20               | XGZC02010043  | 4.11   | SLANGKLEM 16.2                 | XGZC04020281  |
| 1.17  | ZESKANTMOER M8                  | XGZC02020012  | 5      | TRANSPORTWIEL SET              | XGZCMS000043  |
| 1.18  | ZESKANTSCHROEF M8X16            | XGZC02010042  | 5.1    | WIEL D125 D12 W36 MONTAGE      | XGZCMS000014  |
| 1.19  | RING                            | XGZC02030012  | 5.1.1  | TRANSPORTWIEL F125             | XGZC03010023  |
| 1.20  | VEERRING                        | XGZC02030008  | 5.1.2  | KOGELLAGER                     | XGZC02050003  |
| 1.21  | ISO4762-M10x45                  | XGZC02010338  | 5.1.3  | BUS Ø12XØ8X36                  | XGZC04020196  |
| 1.22  | ZESKANTBOUT ISO 4762M 10X30     | XGZC02010337  | 5.2    | WIELDRAGER                     | XGZC04020205  |
| 1.23  | RING                            | XGZC02030021  | 5.3    | SLUITRING                      | XGZC02030017  |
| 1.24  | NYLON BORGMOER M12              | XGZC02020049  | 5.4    | ZESKANTMOER M8                 | XGZC02020012  |
| 1.25  | NYLON BORGMOER M5               | XGZC02020045  | 5.5    | ZESKANTBOUT M8X25              | XGZC02010044  |
| 1.26  | INBUSBOUT M5X20                 | XGZC02010062  | 5.6    | SCHROEF M8                     | XGZC02020010  |
| 1.27  | WATERGELEIDER GELAST            | XGZC040211191 | 5.7    | ZESKANTBOUT M8X60              | XGZC02010053  |
| 1.28  | GELEIDERAIL KUNSTSTOF ZITTING   | XGZC03010051  | 5.8    | VEERRING                       | XGZC02030006  |
| 1.29  | STALEN GELEIDERAIL              | XGZC04021128  | 6      | ZAAGKOP SET                    | XGZCMS0002401 |
| 1.30  | SLUITRING                       | XGZC02030017  | 6.1    | ZAAGKOP GELAST                 | XGZC040211221 |
| 1.31  | GROTE RING                      | XGZC02030013  | 6.2    | GLIJLAGER                      | XGZC02050024  |
| 1.32  | PLAAT                           | XGZC04021852  | 6.3    | SNIJKOP AS                     | XGZC04020195  |
| 1.33  | SCHROEF M8                      | XGZC02020010  | 6.4    | RING                           | XGZC02030014  |
| 2     | POOT SET                        | XGZCMS000033  | 6.5    | NYLON BORGMOER M20             | XGZC02020050  |
| 2.1   | POOT GELAST                     | XGZC04020299  | 6.6    | ZESKANTBOUT M12X60             | XGZC02010258  |
| 2.2   | ZESKANTBOUT M12X70              | XGZC02010168  | 6.7    | NYLON BORGMOER M12             | XGZC02020049  |
| 2.3   | NYLON BORGMOER M12              | XGZC02020049  | 6.8    | VEERRING                       | XGZC02030024  |
| 2.4   | KUNSTSTOF POOTSTEUN             | XGZC03020165  | 6.9    | MOTOR 2.2KW 400V MET M20 BOUT  | XGZC050101231 |
| 2.5   | EINDKAP BUIS Ø25                | XGZC03020071  | 6.9.1  | BINNENKLEP                     | XGZC04023041  |
| 2.6   | RING                            | XGZC02030021  | 6.9.2  | BUITENKLEP                     | XGZC04023042  |
| 2.7   | ZESKANTBOUT M8X50               | XGZC02010048  | 6.9.3  | STOFDICHTHE HOES               | XGZC04023043  |
| 2.8   | ZESKANTMOER M8                  | XGZC02020040  | 6.9.4  | ZESKANTMOER ISO4032-M20LH      | XGZC04022006  |
| 2.9   | NYLON DRUKPLAAT                 | XGZC03010046  | 6.9.5  | ACHTERKLEP 4KW MOTOR           | XGZC04020903  |
| 3     | TRANSPORT HANDVAT SET           | XGZCMS000027  | 6.9.6  | VENTILATOR VOOR 4KW MOTOR      | XGZC03010333  |
| 3.1   | ONDERSTEUNING VOOR TRANSPORTHAN | XGZC04020316  | 6.10   | SCHAKELAAR MET LASER 400V -1M  | XGZC05010117  |
| 3.2   | HANDVAT BUIS                    | XGZC04020283  | 6.11   | KRUISKOPSCHROEF M5X45          | XGZC02010040  |
| 3.3   | SLUITRING                       | XGZC02030017  | 6.12   | RING                           | XGZC02030012  |
| 3.4   | ZESKANTBOUT M8X30               | XGZC02010045  | 6.13   | VEERRING                       | XGZC02030008  |
| 3.5   | DOPSLEUTEL-SCHROEF M4X5         | XGZC02010071  | 6.14   | ZESKANTBOUT M10X30             | XGZC02010159  |
| 3.6   | ZESHOEKIG AFSTANDSSTUK M8       | XGZC04020311  | 6.15   | ZESKANTMOER M10                | XGZC02020047  |
| 4     | WATERBAK SET                    | XGZCMS000038  | 7      | ZAAGTAFEL SET                  | XGZCMS000146  |
| 4.1   | WATERBAK                        | XGZC03010049  | 7.1    | ZAAGTAFEL GELAST               | XGZC04021125  |
| 4.2   | POMP HOUDER                     | XGZC04020144  | 7.2    | GELEIDINGSROLSAMENSTEL         | XGZCMS000147  |
|       | FILTERSET COMPLEET WATERPOMP:   | XGZCMS000284  | 7.2.1  | GELEIDEROL                     | XGZC04021144  |
| 4.3.1 | FILTERSET TBV WATERPOMP         |               | 7.2.2  | DIEPGROEFKOGELLAGER            | XGZC02050025  |
| 4.3.4 | INLAATKLEP                      |               | 7.2.3  | BORGRING                       | XGZC02030050  |
| 9.20  | GAS UNIT 1/4" VROUWELIJK        |               | 7.3    | ZESKANTBOUT M12X50             | XGZC02010169  |

| Nr.    | Omschrijving              | Artikelnummer | Nr.    | Omschrijving                      | Artikelnummer |
|--------|---------------------------|---------------|--------|-----------------------------------|---------------|
| 7.4    | ZESKANTMOER M12           | XGZC02020053  | 8.35   | SLUITRING                         | XGZC02030017  |
| 7.5    | ONDERSTEUNENDE ROLSET     | XGZCMS000148  | 8.36   | VEERRING DIN 127 - A8             | XGZC02030006  |
| 7.5.1  | ONDERSTEUNENDE ROL        | XGZC04021145  | 8.37   | RING                              | XGZC02030015  |
| 7.5.2  | DIEPGROEFKOGELLAGER       | XGZC02050025  | 8.38   | KABELBRUG                         | XGZC04020142  |
| 7.5.3  | BORGRING                  | XGZC02030050  | 8.39   | VEERRING                          | XGZC02030010  |
| 7.6    | BUS                       | XGZC04021146  | 8.40   | KRUIKOPSCHROEF M4X25              | XGZC02010039  |
| 7.7    | ZESKANTBOUT M8X12         | XGZC02010121  | 8.41   | ZESKANTBOUT M12X25                | XGZC02010259  |
| 7.8    | ZESKANTSCHROEF M8X16      | XGZC02010042  | 8.42   | IGUS LAGER                        | XGZC02050020  |
| 7.9    | BUS                       | XGZC04021147  | 9      | 600 ZAAGKAPBESCHERMING SET        | XGZCMS000239  |
| 7.10   | ANIT KANTELWIEL SET       | XGZCMS000149  | 9.1    | ZAAGKAP GELAST                    | XGZC04022473  |
| 7.10.1 | ANTI KANTEL WIEL          | XGZC04021148  | 9.2    | RUBBER VOOR HET BLOKKEREN VAN WA  | XGZC03020109  |
| 7.10.2 | KOGELLAGER                | XGZC02050002  | 9.3    | RUBBEREN VASTE PLAAT              | XGZC04021108  |
| 7.10.3 | BORGVEER                  | XGZC02030051  | 9.4    | KRUIKOPSCHROEF M4X12              | XGZC02010038  |
| 7.11   | ZESKANTBOUT M8X35         | XGZC02010090  | 9.5    | VASTE PLAAT                       | XGZC04022474  |
| 7.12   | KALIBRATIE PLAAT          | XGZC04021116  | 9.6    | INBUSBOUT M10X70                  | XGZC02010194  |
| 7.13   | DUWHANDVAT SET            | XGZCMS000188  | 9.7    | NYLON BORGMOER M10                | XGZC02020008  |
| 7.13.1 | DUWHANDVAT                | XGZC04021878  | 9.8    | Y-VERDELER GELAST-600             | XGZC04022475  |
| 7.13.2 | PLASTIC HENDEL            | XGZC03010018  | 9.9    | STICKER MET PIJL                  | XGZC06020026  |
| 7.13.3 | EINDKAP BUIS Ø20          | XGZC03010027  | 9.10   | BESCHERMSTICKER                   | XGZC06020022  |
| 7.14   | ZESKANTBOUT M8X35         | XGZC02010118  | 9.11   | FLENSMOER M10                     | XGZC02020070  |
| 7.15   | VEERRING                  | XGZC02030006  | 9.12   | RING                              | XGZC02030012  |
| 7.16   | SLUITRING                 | XGZC02030017  | 9.13   | ZESKANTBOUT M8X25                 | XGZC02010044  |
| 7.17   | DRIJFSTANG                | XGZC04021143  | 9.14   | SLUITRING                         | XGZC02030017  |
| 8      | DRAAGARM SET              | XGZCMS0002311 | 9.15   | ZESKANTMOER M8                    | XGZC02020012  |
| 8.1    | VERTICALE ARM GELAST      | XGZC040219131 | 9.16   | VEERRING                          | XGZC02030006  |
| 8.2    | LAGER                     | XGZC02050035  | 9.17   | REDUCERENDE NIPEL                 | XGZC02070001  |
| 8.3    | ZESKANTBOUT M12X60        | XGZC02010258  | 9.18   | WATER AANSLUITING ELLEBOOG        | XGZC04022021  |
| 8.4    | NYLON BORGMOER M12        | XGZC02020049  | 9.19   | WATERKRAAN 1/4 '                  | XGZC02070002  |
| 8.5    | OOGSCHROEVEN              | XGZC02050019  | 9.21   | SLANGKLEM 16.2                    | XGZC04020281  |
| 8.6    | DRIJFSTANG                | XGZC04021137  | 9.22   | BRONWATERLEIDING                  | XGZC03010162  |
| 8.7    | ZESKANTMOER M12           | XGZC02020053  | 10     | SET LASERFRAME                    | XGZCMS0002061 |
| 8.8    | RONDE DOP F30             | XGZC03020112  | 10.1   | LASER FRAME                       | XGZC040220021 |
| 8.9    | RING                      | XGZC02030012  | 10.2   | LASERSET                          | XGZCTS000103  |
| 8.10   | VEERRING                  | XGZC02030008  | 10.2.1 | LASER BALL_L                      | XGZC03010214  |
| 8.11   | BOUT M10X20               | XGZC02010171  | 10.2.2 | LASER BALL_R                      | XGZC03010215  |
| 8.12   | PLAT STAAL                | XGZC04021853  | 10.2.3 | LASERLAMP 9X21 -110HOEK           | XGZC05010070  |
| 8.13   | PLAT STAAL                | XGZC04021854  | 10.2.4 | LASERBAL HOOFD COVER              | XGZC03010216  |
| 8.14   | ROTTERENDE ARM GELAST     | XGZC040218551 | 10.2.5 | HEX. INBUSBOUT M4X10              | XGZC02010255  |
| 8.15   | VEERRING                  | XGZC02030024  | 10.2.6 | ZESKANTMOER M4                    | XGZC02020015  |
| 8.16   | OOGBOUT M12 x 60          | XGZC02010286  | 10.2.7 | HEX. INBUSBOUT M4X25              | XGZC02010256  |
| 8.17   | DIEPTE-AANPASSINGSBALK    | XGZC04021882  | 10.2.8 | LASERBAL ZIJKANT COVER            | XGZC03010217  |
| 8.18   | ZESKANTBOUT M12X30        | XGZC02010218  | 10.3   | VEILIGHEIDSTICKER                 | XGZC06020180  |
| 8.19   | RING                      | XGZC02030021  | 10.4   | VEILIGHEIDSTICKER                 | XGZC06020181  |
| 8.20   | NYLON SLOT DUNNE MOER M12 | XGZC02020054  | 10.5   | ZESKANTBOUT M8X12                 | XGZC02010121  |
| 8.21   | GROTE RING                | XGZC02030049  | 10.6   | VEERRING                          | XGZC02030006  |
| 8.22   | HANDVAT                   | XGZC03010159  | 10.7   | SLUITRING                         | XGZC02030017  |
| 8.23   | ONDERSTEUNING SPATSCHERM  | XGZC04021912  | 10.8   | HEX. INBUSBOUT M4X25              | XGZC02010256  |
| 8.24   | SPATSCHERM FRAME          | XGZC03020159  | 11     | GEREEDSCHAPSHOUDER EN GEREEDSCHAP | XGZCMS000243  |
| 8.25   | PLAAT                     | XGZC04021857  | 11.1   | HOUDER VOOR GEREEDSCHAP           | XGZC04022487  |
| 8.26   | ZESKANTBOUT M6X12         | XGZC02010184  | 11.2   | SLEUTEL 13 MM                     | XGZC04020163  |
| 8.27   | VEERRING                  | XGZC02030019  | 11.3   | SLEUTEL 30 MM                     | XGZC04020162  |
| 8.28   | SLUITRING                 | XGZC02030020  | 11.4   | RING                              | XGZC02030015  |
| 8.29   | KRUIKOPBOUT M5X16         | XGZC02011022  | 11.5   | VEERRING                          | XGZC02030010  |
| 8.30   | SLUITRING ISO 140HV       | XGZC02030016  | 11.6   | KRUISPAN ZESKANTBOUT M4X10        | XGZC02010180  |
| 8.31   | VEERRING A5               | XGZC02030011  | 11.7   | SLEUTEL 17MM                      | XGZC04020589  |
| 8.32   | BUS VOOR LAGER            | XGZC04021858  | 11.8   | INBUSSLEUTEL 3MM                  | XGZC04022208  |
| 8.33   | VEER BS400                | XGZC04021012  | 12     | HIJSOOG RECHTHOEKIG SET 2         | XGZCMS000258  |
| 8.34   | ZESKANTBOUT M8X25         | XGZC02010044  | 12.1   | MACHINE HIJSOOG RECHTHOEKIG       | XGZC04022632  |



| <b>Nr.</b> | <b>Omschrijving</b>          | <b>Artikelnummer</b> |
|------------|------------------------------|----------------------|
| 12.2       | ZESKANTBOUT M8X25            | XGZC02010044         |
| 12.3       | ZESKANTMOER M8               | XGZC02020040         |
| 12.4       | GROTE RING                   | XGZC02030013         |
| 12.5       | VERGRENDELPLAAT              | XGZC04022905         |
| 12.6       | AFSTANDSHOUDER               | XGZC04022906         |
| 13         | FRAME VERSTERKENDE MONTAGE   | XGZCMS000285         |
| 13.1       | VERSTEVIINGSSTUK             | XGZC04023036         |
| 13.2       | SLUITRING                    | XGZC02030017         |
| 13.3       | VEERING DIN 127 - A8         | XGZC02030006         |
| 13.4       | ZESKANTSCHROEF M8X16         | XGZC02010042         |
| 13.5       | ZESHOEKIG AFSTANDSSTUK M8    | XGZC04020311         |
|            | STROOMKABEL 400V GP/GT SERIE | XGZC05020039         |